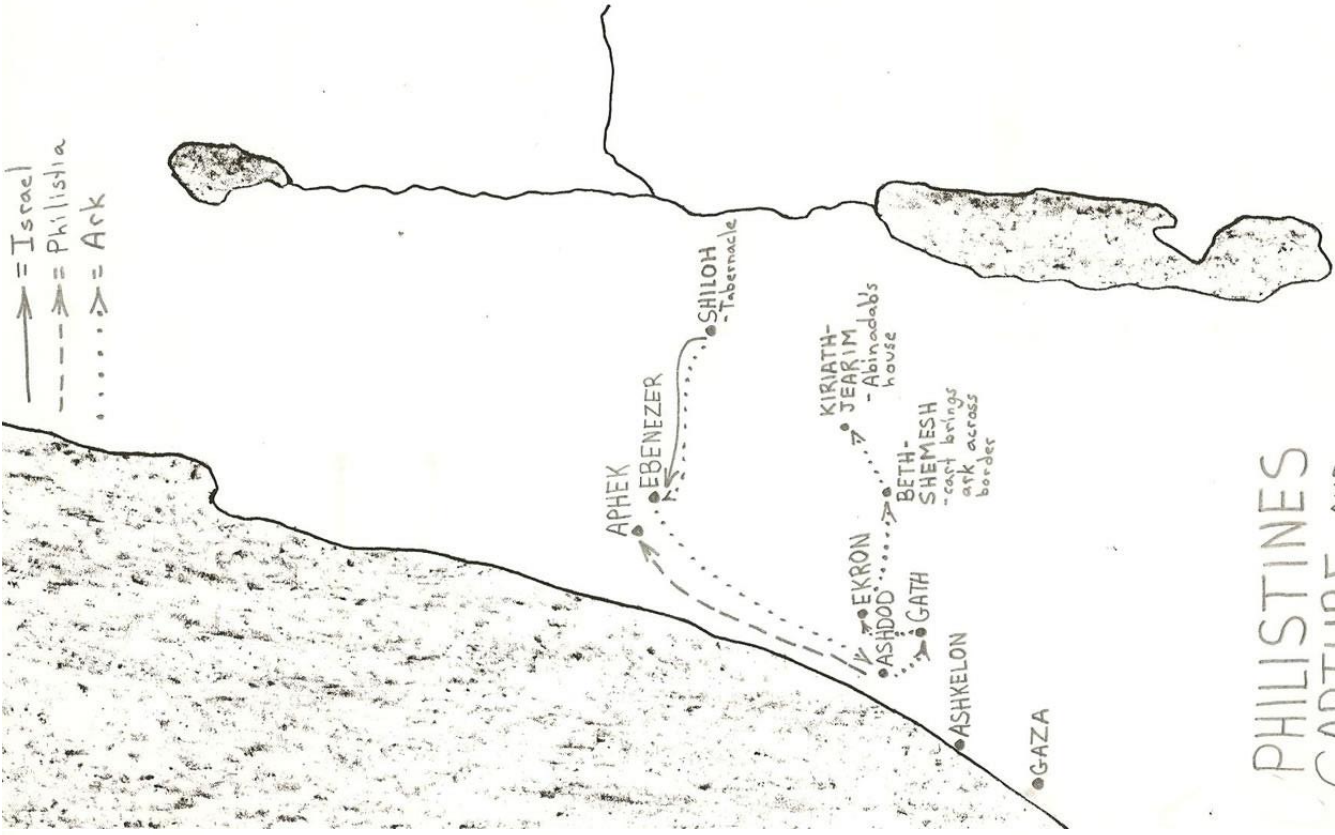
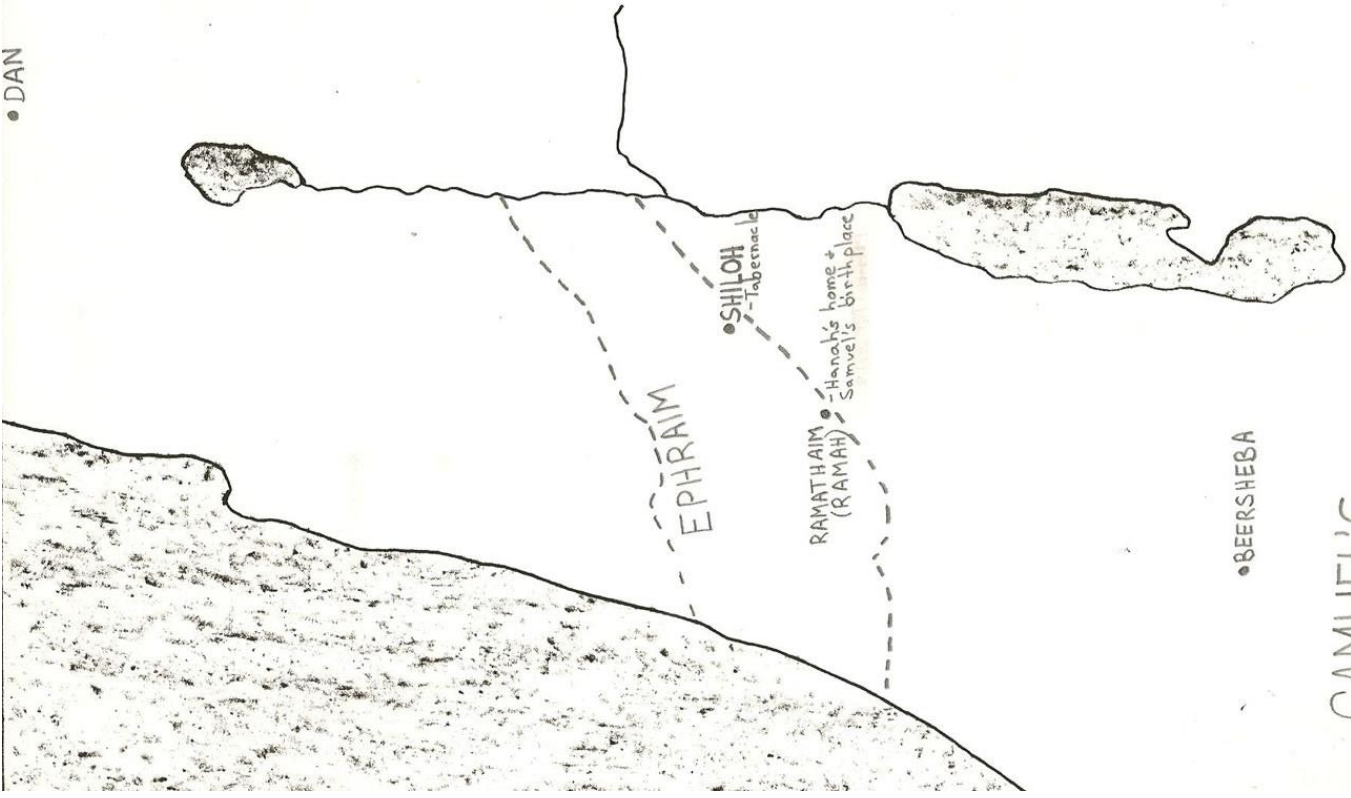


——— = Israel  
 - - - - = Philistia  
 . . . . = Ark



PHILISTINES  
 CAPTURE AND  
 RETURN ARK  
 (1 Sm. 5,6)

• DAN



SAMUEL'S  
 CHILDHOOD  
 (1 Samuel 1-3)



Hills of Ephraim around Shiloh



Galyn takes a trail to the excavation site of 1100 BC Shiloh



Ephraim Hill Country as seen from the windy hill of Shiloh



Galyn goes off the trail to see the excavation of Shiloh from the days of the judges (1250-1100 BC)



Galyn points at pottery remains from the days of the Book of Judges and Samuel



Very near the location of the Tabernacle



The archaeology at Shiloh shows it was a cultic center and NOT a residential city. Shiloh was a place of public gathering, but not a place where people worked and lived their daily lives like other Israel cities, towns or villages.